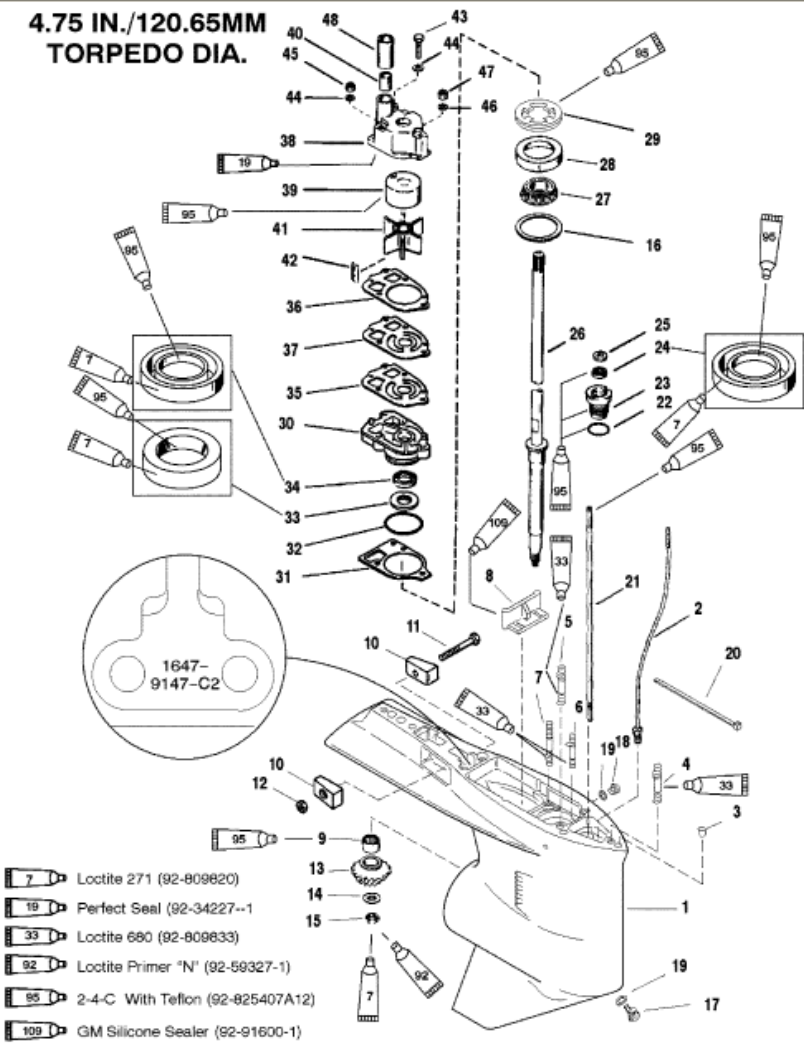


**4.75 IN./120.65MM
 TORPEDO DIA.**



- Loctite 271 (92-809820)
- Perfect Seal (92-34227--1)
- Loctite 680 (92-809833)
- Loctite Primer "N" (92-59327-1)
- 2-4-C With Teflon (92-825407A12)
- GM Silicone Sealer (92-91600-1)

GEAR HOUSING (DRIVE SHAFT)(STANDARD ROTATION)

Parts List						
Ref	Class	Part	Description	Qty	Comment	Footnote
1	1647	9148T93	GEAR HOUSING	1	(BLACK)(BASIC)	
2	22	85822A10	CONNECTOR ASSEMBLY	1		
3	17	43044	DOWEL PIN	2		
4	16	78638	2	1	(LONG)	
4	16	18978	3	1	(X-LONG)	
5	16	57920	3	2		
6	16	56297	2	1		
7	16	30667	STUD (3-1/8 IN.)	2		
8		67891	FILLER BLOCK	1		
9	31	42647A	1	1		
10		826134	ROLLER BEARING	1		
11	10	40003	33	2		
11	10	40003	33	1		
12	11	826833	6	1		
13	43	44101	3	1	(2.0:1 GEAR RATIO-14TEETH)	
13		NSS	PINION GEAR(PART OF 43-82817	1	(1.87:1GEAR RATIO-15TEETH)	6
14	12	92721	WASHER	1	INCLUDED WITH FORWARD GE	
15	11	35921	NUT	1	INCLUDED WITH FORWARD GE	
16	15	42637A	1	AR	INCLUDED WITH FORWARD GE	5
17	22	67892A	1	1		
18	10	79953A	2	1		
19	12	19183	WASHER	2		8,9
20		56762	STA-STRAP	1		
21		78902	SHIFT SHAFT	1		
22	25	25439	O-RING	1		4,9
23	23	77631A	2	1		9
24	26	816464	1	1		9
25	12	77674	WASHER-RUBBER	1		
26	45	44000	1	1	(LONG)	
26	45	44209	1	1	(X-LONG)	
27	31	36387A	1	1		
28		NSS	CUP	1		6
29		824519	RETAINER	1		
30	46	42579A	3	1		
31	27	42631	1	1		4,8,9
32	25	90011	O-RING	1		4,8,9
33	26	89238	OIL SEAL	1		9
34	26	16977	OIL SEAL	1		9
35	27	85608	1	1		4,8,9
36	27	85609	1	1		4,8,9
37		32435	FACE PLATE	1		8
38	46	96149A	1	1		8